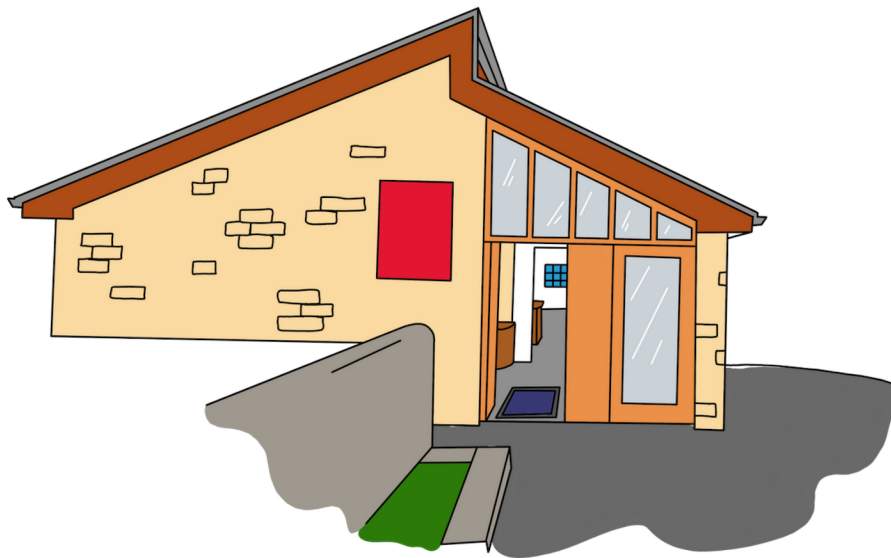


VINDOLANDA

CHARITABLE TRUST

Welcome to the Roman Army Museum, part of the award-winning Vindolanda Trust, offering an indoor and accessible experience of life on the northern frontier of the Roman Empire.

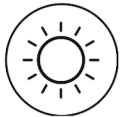
Immerse yourself in excavated artefacts from Vindolanda and Magna Fort, be recruited into the Roman Army, and experience our HD 'Edge of Empire' film.



KEY



Sensory Bag



Natural Lighting



Food and Drink Available



Baby Changing Facilities



Busy room



Toilets



Seating



AV Timer



This room contains audio



This room contains video



No closed captions



Accessible Toilet



Information



You can touch this



Hearing Loop

MAIN ENTRANCE

This is the entrance to the Roman Army Museum. It is level access from the car park. The doors are manual but if you need assistance our friendly museum team are always on hand.



MAIN ENTRANCE

The Vindolanda Trust team wear navy blue fleeces and light blue shirts. They will always be wearing a name badge, so don't hesitate to say 'hey' if you need a hand.



If you would like a sensory bag for your visit to the Roman Army Museum, ask for one from the ticket desk.

There is plenty of natural light as you enter the Roman Army Museum.

Please ask for magnifying sheets if needed.



GALLERY 1

To enter the museum, there is a 8.5m long internal ramp of up to 1:5 gradient.



There are a few mannequins in this gallery, the lights are low.

There are two audio visual's playing.

There is a wheelchair accessible moving map of the Roman Empire.



If you need some headphones, you will find these in your sensory bag.



GALLERY 1



There are some mannequins showing different ways Roman soldiers dressed.

This is the Recruitment Tent. It has one step down to a padded bench. There is a video with audio which runs on a timer.



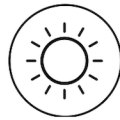
ROMAN CLASSROOM

This is wheelchair accessible, with one step up to the benches.

Press the button on the right-hand side of the room to start the Roman lesson. This lasts for around 20 minutes.



There is natural light in this room and is usually the quietest part of the museum.



CINEMA

There are 45 seats in the cinema, with designated wheelchair spaces at the front. The film will run for 20 minutes and has no audio description or subtitles.



It is very dark in the cinema and the film has some scenes of a Roman Celtic fight so is loud in parts.



THE SEVERAN GALLERY

Just outside of the cinema, you will find the Severan Gallery. There are dark carpets and dark walls with a video playing on a loop. There is no audio.



Please ask at the front desk for magnifying sheets if needed.



HADRIAN GALLERY

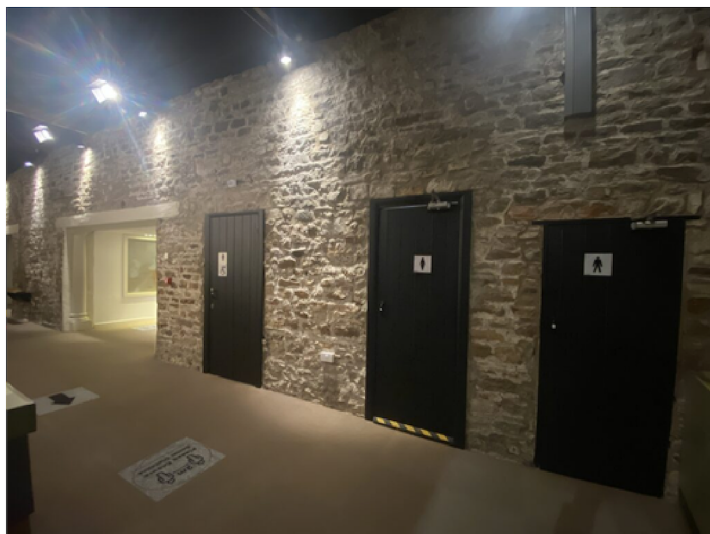
This is an evenly lit gallery with motion triggered audio where Emperor Hadrian is talking about his life. There are some headphones in the sensory bag if you do not want to hear this.



There is a padded bench with no back rest in this gallery.



TOILETS



Public toilets are located within the museum on the lower ground floor with access via the ramps.

This is the accessible toilet.



GALLERY 3

There is a ramp to access Gallery 3.



There are lots of examples of Roman artillery and a bow and arrow for you to try.

As you move through the gallery, there is a motion triggered video. This explains about life for a Roman soldier at the edge of the empire. There is a padded bench with no back rest in this gallery.



ACTIVITY CENTRE

There is level access to the activity centre.



There is a video with audio running on a loop. This is approximately three minutes long.

There are large windows overlooking Magna Fort letting in lots of natural light. There are benches to sit on.



This room can get busy when events are on. Please check our website for further details.



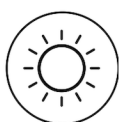
SHOP AND CAFÉ

The shop and café are on one level, accessed from the main museum entrance.



There is lots of natural light and our museum team on hand to assist you. Please ask for assistance when getting objects off higher shelves or in glass cases.

Our café is self-serve.
Let us know if you have any allergies.
The tables and chairs can be moved if needed, just ask one of our friendly museum team.



FURTHER INFORMATION

Contact us:

info@vindolanda.com

01434 344277

www.romanarmymuseum.com

[Access Statement](#)

[Sensory Museum Map](#)

